



Images simulated for illustrative purposes only.


EV Charger EV Series

Connecting to a Better Life


LG Electronics EV Charger



 Stylish Exterior

 UL Certified,
RoHS Compliant

 Installation App

 Multilingual
Audio Guide

 Dynamic Load
Management

 Made in USA

Wallbox Type, Level 2 EV Charger - 11 kW

Seamless Front Panel

Reflected the latest design trends of home appliances

Segment LED Display

Shows charging power, elapsed time, delivered energy, estimated cost and user guide

Audio Speaker

English, Spanish and French supported

SAE J1772

Charging Connector



Wi-Fi / Bluetooth Module

Connects to OCPP server / Install App

Half Eclipse Style LED Indicator

Delivers upscale feel as well as charging status

RFID Card Reader

Supports RFID, NFC tapping

Connector Holster

Cable Holder

Installation App

Adjust network, language, speaker volume, max current and load management

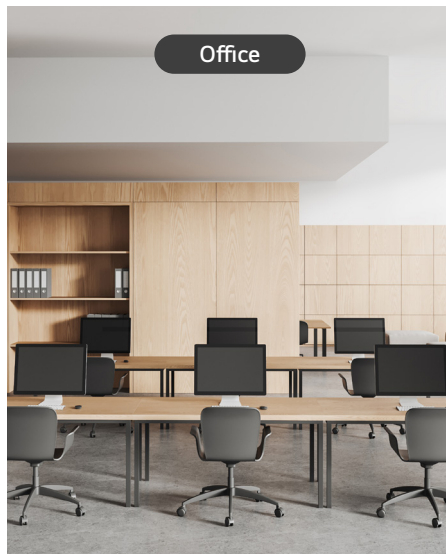


Application Environments

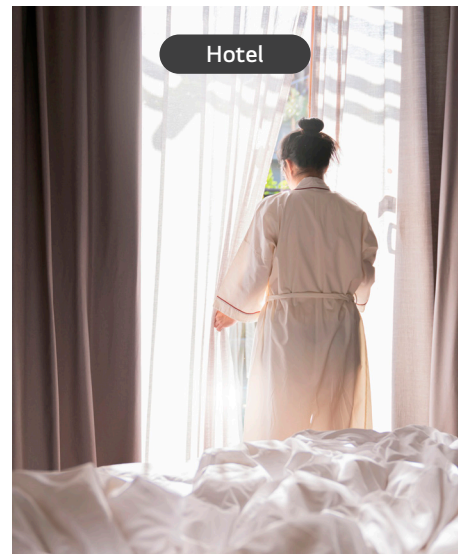
Multi Family



Office



Hotel

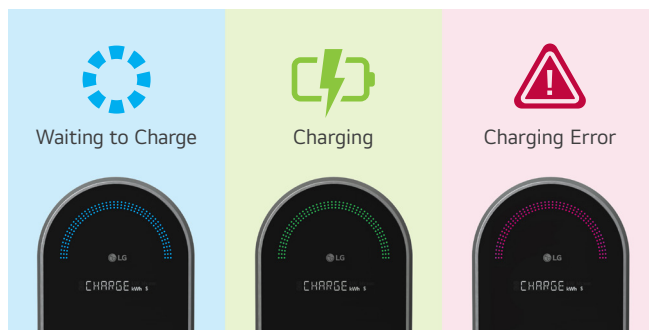


Key Features



Seamless Front, Curved Side Panel

The latest design trends of home appliances are reflected to increase the perceived value of charging space.

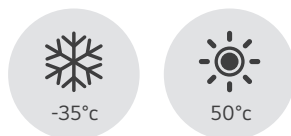


Half Eclipse Style LED Indicator

Charging status delivered in an upscale, easy-to-read format.



Durable and Reliable



LG charger is able to be used in a temperature range from -31°F to 131°F (-35°C to 50°C) and relative humidity up to 95%.

Environmental Operation Ratings



LG charger has limited protection against dust and water ingress rated at IP55 / NEMA 3R grade and against physical impact rated at IK10 grade.

Various Protective Functions



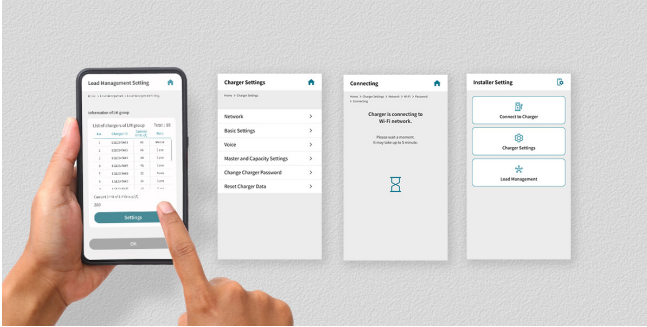
For the safety of user, charger, electric vehicle electric grid, LG charger provides various protective functions: over current, over voltage, under voltage, over temperature, short circuit, surge, ground fault, residual current, internet connection lost.

RoHS Compliant



For the safety of user, installer and the environment, LG charger restricts the use of certain hazardous substances designated by RoHS Directive.

Quick Installation



Easy Setting via Mobile App

LG's iOS / Android based mobile application supports installer to set network, language, speaker volume, max current and loads management.



Integrated Holster and Cable Holder

Extra holster and cable holder are not required.



Max Current Variation of Individual Charger

If the current output needs to be limited due to power grid constraints, the installer can select 16/24/32/40/48A as a maximum current.

Efficient Management



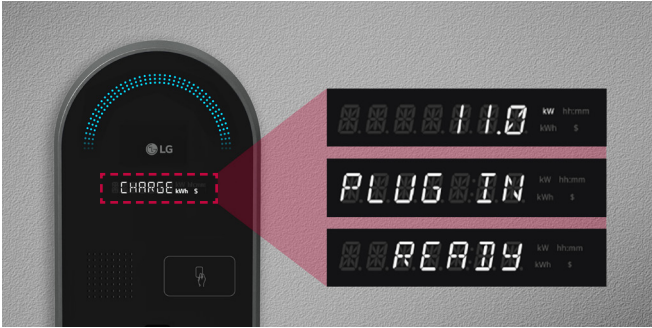
Dynamic Load Management of Multiple Chargers

Dynamic load management allows the operator to optimize charging performance based on power limitations of charging station via site-level communication among the chargers.

Remote Software Update

Over-the-air (OTA) update is supported.

Convenient Use



Segment LED Display

Changing power, elapsed time, delivered energy, estimated cost and even the vuser guide and displayed on the screen.



User Authentication

RFID, NFC, QR code and the LG Mobile app are available.



Multilingual Audio Guide

English Spanish and French audio guides are provided.

Production - Site in USA for LG EV Charger



Specifications

AC Charger

11 kW Charger (Wall Mount Type)



11 kW AC Wallbox (EVW011SK-SN)

Electrical Characteristics	Max Output Current	16A	24A	32A	40A	48A
	Max Output Power at 240 V	3.8 kW	5.8 kW	7.7 kW	9.6 kW	11.5 kW
	Input Voltage	AC 208 / 240 V, 60 Hz				
	Input Wiring Scheme / Type	L1, L2, GND / Hardwire, 2.6 ft (0.8 m) Pigtail				
Cable / Connector	Connector Type	SAE J1772				
	Cable Length	23 ft (7 m)				
Connectivity	Network	Ethernet (10/100 Mb/s), RS485, 2.4/5 GHz Wi-Fi (802.11 a/b/g/n)				
	Protocol	OCPP1.6J (Upgradable to OCPP2.0.1 Later)				
	Software Update	USB and Over-the-air (OTA) Available				
User Interface	Authentication	RFID, NFC, QR*, Mobile App*				
	Screen	14 Segment LED				
	Status Indication	Color LED and Audio				
General Characteristics	Dimension (WHD)	8.9 × 20.2 × 6.5 inchs (226 × 512 × 165 mm)				
	Weight	17.6 lbs (8 kg)				
	Operating Temperature	-31°F to 122°F (-35°C to 50°C)				
	Storage Temperature	-40°F to 158°F (-40°C to 70°C)				
	Altitude	Up to 6,560 ft (2,000 m)				
	Humidity	< 95% Relative Humidity, non-Condensing				
	Enclosure Rating	IP55, NEMA 3R, IK10				
Protective Function	Over Current, Over Voltage, Under Voltage, Over Temperature, Short Circuit, Surge, Ground Fault, Residual Current					
Certification and Standard	UL/cUL, FCC Class B, IEC61851, NTEP/CTEP, RoHS, Energy Star, ADA					
Warranty	3 year Standard Warranty, 1/2 year Extension Available					
Extended Warranty (Sold Separately)	1 Year Option; 2 Year Option					

* Device level supported